



CUSTOMER:

Customer Name: ALINVEST

PROJECT:

Project Code: E2558

Project Name: ALFAGEN

DOCUMENT INFORMATION:




Document Title: BASIC ELECTRICAL CABINET LAYOUT


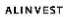
Customer File Name: 2558-0000-GEN-E-DWG-ECLA

Customer Revision Number: J1

Contractor File Name: 2558-0000-GEN-E-DWG-ECLA

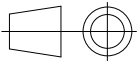
Contractor Revision Number: J1

G	J1	2025/11/21	Change in RIA cabin width, from 1600 mm to 2000 mm and overall review.	ANSA	ANSA	RORI											G						
	I1	2025/10/20	Elec Room dimensions updated based on A1B drawing 01_1_101304 KOORDINA NI SITUACE. Cabinet size & tagging updated.	INGA	INGA	JOCA																	
	H1	2025/08/05	Elec Room billet lines: 3311-TMT & 3312-TMT TOP 7 corrected	INGA	INGA	JOCA																	
	G1	2025/05/28	Elec Room billet lines: cabinet layout updated due to ceiling constraint	INGA	INGA	JOCA																	
H	F1	2025/07/27	Elec Room Strip 1 & 2 resized, cabinet layout updated	INGA	INGA	JOCA											H						
	E1	2025/03/20	Cabinets of Hyd. Groups move to Elec. Rooms	INGA	INGA	JOCA	CONTRACTOR		CONTRACTOR dwg number		Rev. J1	Project Code E2558	Project Name ALFAGEN										
	D1	2025/03/20	RIA machines' Distribution Switchboard in Billet Elec. Room	INGA	INGA	JOCA			2558-0000-GEN-E-DWG-ECLA			Document Title BASIC ELECTRICAL CABINET LAYOUT											
	C1	2025/01/19	Cabinet dimensions and layout updated. Estimated weights	INGA	INGA	JOCA			CLIENT		CLIENT dwg number		Rev. J1	BASIC ELECTRICAL CABINET LAYOUT		Scale see dwg							
	B1	2025/01/16	Cont. Casting Area layout changed + RFI power cabinet	INGA	INGA	JOCA	2558-0000-GEN-E-DWG-ECLA				DESIGNED: ANSA	DRAWN: ANSA		APPROVED: RORI	Format A3								
	A1	2025/01/10	Initial revision	INGA	INGA	JOCA					DATE: 2025/11/21	DATE: 2025/11/21		DATE: 2025/11/21	Sheet 1 of 10								
	Rev.	Date	Revisions description	Designed	Draw	Approved																	
1		2		3		4		5		6		7		8		9		10		11		12	

	1		2		3		4		5		6		7		8		9		10		11		12
A																							A
B																							B
C																							C
D																							D
E																							E
F																							F
G	J1	2025/11/21	Change in RIA cabin width, from 1600 mm to 2000 mm and overall review.		ANSA		ANSA		RORI														G
	I1	2025/10/20	Elec Room dimensions updated based on A1B drawing 01_1_101304 KOORDINA NÍ SITUACE. Cabinet size & tagging updated.		INGA		INGA		JOCA														
	H1	2025/08/05	Elec Room billet lines: 3311-TMT & 3312-TMT TOP 7 corrected		INGA		INGA		JOCA														
	G1	2025/05/28	Elec Room billet lines: cabinet layout updated due to ceiling constraint		INGA		INGA		JOCA														
H	F1	2025/07/27	Elec Room Strip 1 & 2 resized, cabinet layout updated		INGA		INGA		JOCA														
	E1	2025/03/20	Cabinets of Hyd. Groups move to Elec. Rooms		INGA		INGA		JOCA		CONTRACTOR		CONTRACTOR dwg number	Rev.	Project Code	Project Name							
	D1	2025/03/20	RIA machines' Distribution Switchboard in Billet Elec. Room		INGA		INGA		JOCA				2558-0000-GEN-E-DWG-ECLA	J1	E2558	ALFAGEN							
	C1	2025/01/19	Cabinet dimensions and layout updated. Estimated weights		INGA		INGA		JOCA				CLIENT dwg number	Rev.	Document Title								
	B1	2025/01/16	Cont. Casting Area layout changed + RFI power cabinet		INGA		INGA		JOCA		CLIENT		2558-0000-GEN-E-DWG-ECLA	J1	BASIC ELECTRICAL CABINET LAYOUT				Scale	see dwg			
	A1	2025/01/10	Initial revision		INGA		INGA		JOCA						DESIGNED:	ANSA	DRAWN:	ANSA	APPROVED:	RORI	Format	A3	
	Rev.	Date	Revisions description		Designed		Draw		Approved						DATE:	2025/11/21	DATE:	2025/11/21	DATE:	2025/11/21	Sheet	2 OF 10	
	1		2		3		4		5		6		7		8		9		10		11		12

	1	2	3	4	5	6	7	8	9	10	11	12
A												
B												
C												
D												
E												
F												
G	J1	2025/11/21	Change in RIA cabin width, from 1600 mm to 2000 mm and overall review.	ANSA	ANSA	RORI						
	I1	2025/10/20	Elec Room dimensions updated based on A1B drawing 01_1_101304 KOORDINA NÍ SITUACE. Cabinet size & tagging updated.	INGA	INGA	JOCA						
	H1	2025/08/05	Elec Room billet lines: 3311-TMT & 3312-TMT TOP 7 corrected	INGA	INGA	JOCA						
	G1	2025/05/28	Elec Room billet lines: cabinet layout updated due to ceiling constraint	INGA	INGA	JOCA						
	F1	2025/07/27	Elec Room Strip 1 & 2 resized, cabinet layout updated	INGA	INGA	JOCA						
	E1	2025/03/20	Cabinets of Hyd. Groups move to Elec. Rooms	INGA	INGA	JOCA	CONTRACTOR	insertec Furnaces & Refractories	CONTRACTOR dwg number 2558-0000-GEN-E-DWG-ECLA	Rev. J1	Project Code E2558	Project Name ALFAGEN
	D1	2025/03/20	RIA machines' Distribution Switchboard in Billet Elec. Room	INGA	INGA	JOCA						
	C1	2025/01/19	Cabinet dimensions and layout updated. Estimated weights	INGA	INGA	JOCA						
	B1	2025/01/16	Cont. Casting Area layout changed + RFI power cabinet	INGA	INGA	JOCA	CLIENT	ALINVEST	CLIENT dwg number 2558-0000-GEN-E-DWG-ECLA	Rev. J1	Document Title BASIC ELECTRICAL CABINET LAYOUT	
	A1	2025/01/10	Initial revision	INGA	INGA	JOCA					DESIGNED: ANSA	DRAWN: ANSA
	Rev.	Date	Revisions description	Designed	Draw	Approved					APPROVED: RORI	Format A3
											DATE: 2025/11/21	DATE: 2025/11/21
											DATE: 2025/11/21	Sheet 3 of 10
	1	2	3	4	5	6	7	8	9	10	11	12

Page	Revision									
	A1	B1	C1	D1	E1	F1	G1	H1	I1	J1
1										
2										
3										
4										
5										
6										
7										
8										
9										
10										
11										
12										
13										
14										
15										
16										
17										
18										
19										
20										
21										
22										
23										
24										
25										




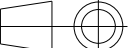

Scale see dwg

Format A3

Sheet 3 of 10

BASIC ELECTRICAL CABINET LAYOUT

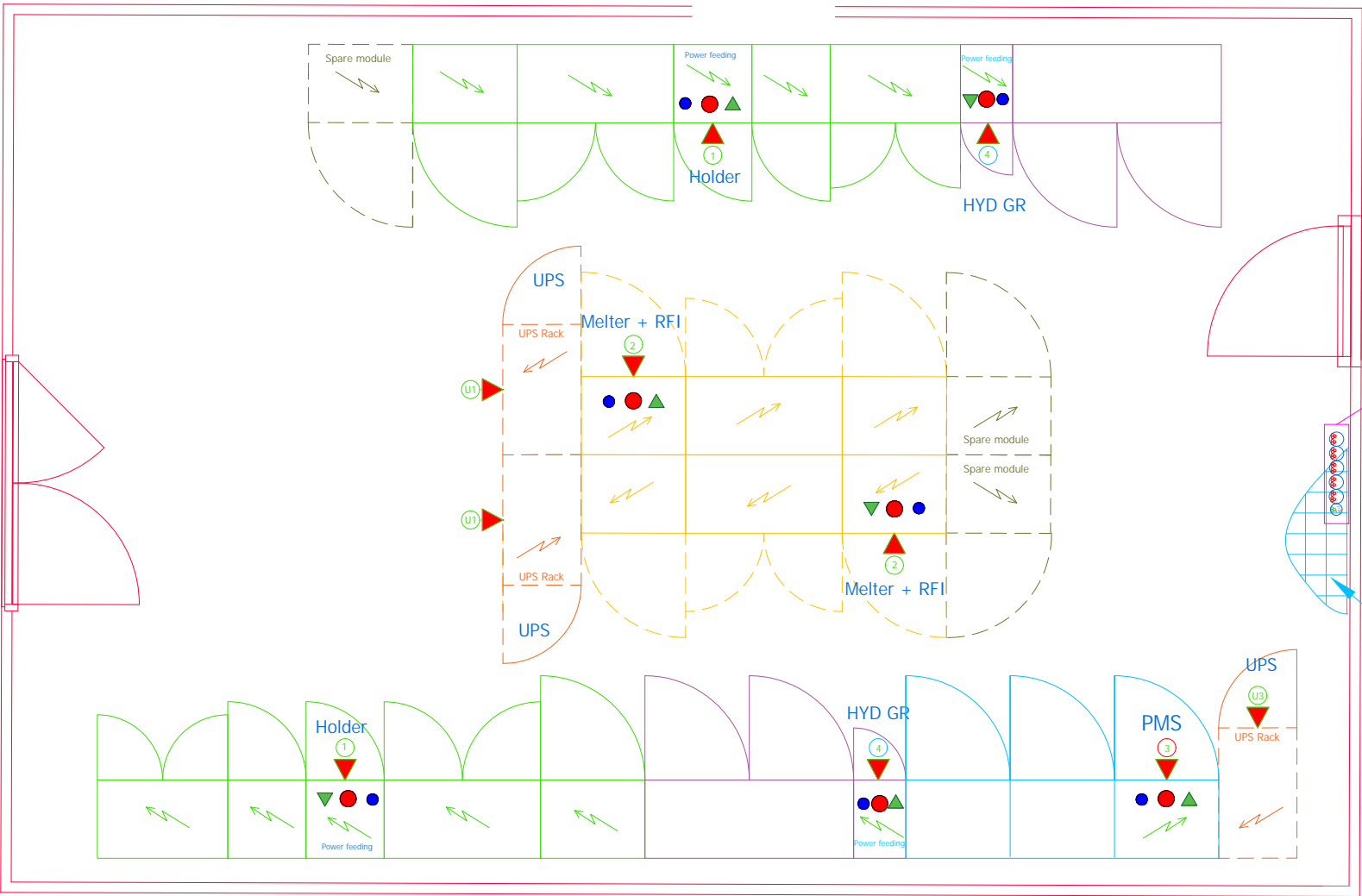
CONTINUOUS CASTING

G	J1	2025/11/21	Change in RIA cabin width, from 1600 mm to 2000 mm and overall review.	ANSA	ANSA	RORI																	
	I1	2025/10/20	Elec Room dimensions updated based on A1B drawing 01_1_101304 KOORDINA NÍ SITUACE. Cabinet size & tagging updated.	INGA	INGA	JOCA																	
	H1	2025/08/05	Elec Room billet lines: 3311-TMT & 3312-TMT TOP 7 corrected	INGA	INGA	JOCA																	
	G1	2025/05/28	Elec Room billet lines: cabinet layout updated due to ceiling constraint	INGA	INGA	JOCA																	
H	F1	2025/07/27	Elec Room Strip 1 & 2 resized, cabinet layout updated	INGA	INGA	JOCA	<div>CONTRACTOR</div> <div></div> <div>CONTRACTOR dwg number</div> <div>2558-0000-GEN-E-DWG-ECLA</div> <div>Rev. J1</div> <div>Project Code E2558</div> <div>Project Name ALFAGEN</div> <div></div>																
	E1	2025/03/20	Cabinets of Hyd. Groups move to Elec. Rooms	INGA	INGA	JOCA																	
	D1	2025/03/20	RIA machines' Distribution Switchboard in Billet Elec. Room	INGA	INGA	JOCA																	
	C1	2025/01/19	Cabinet dimensions and layout updated. Estimated weights	INGA	INGA	JOCA																	
	B1	2025/01/16	Cont. Casting Area layout changed + RFI power cabinet	INGA	INGA	JOCA																	
	A1	2025/01/10	Initial revision	INGA	INGA	JOCA																	
	Rev.	Date	Revisions description	Designed	Draw	Approved		<div>CLIENT</div> <div></div> <div>CLIENT dwg number</div> <div>2558-0000-GEN-E-DWG-ECLA</div> <div>Rev. J1</div> <div>Document Title</div> <div>BASIC ELECTRICAL CABINET LAYOUT</div> <div>Scale see dwg</div> <div>DESIGNED: ANSA</div> <div>DRAWN: ANSA</div> <div>APPROVED: RORI</div> <div>Format A3</div> <div>DATE: 2025/11/21</div> <div>DATE: 2025/11/21</div> <div>DATE: 2025/11/21</div> <div>Sheet 4 of 10</div>															
1		2		3		4		5		6		7		8		9		10		11		12	

ELECTRICAL CABINETS - CONTINUOUS CASTING AREA

STRIP CASTING LINES 1 & 2

Strip Area - Indoor E-room



Customer's scope (ALINVEST), feeder shall reach the bottom entry of each equipment's power cabinet (PCP)
Section and number of wires per feeder to be provided by Customer (ALINVEST)
Assuming that power feeders reach the E-room in cable/ladder trays and entering from the bottom to the raised floor cubicle. Then, feeders distributed in trays or conduits under the floor to the T.O.P.
Position of the pass-through hole in the E-room structure may depend on the Customer's cable routing and the origin of the distribution room.

Raised floor
h = 500 mm

MCC Room requirements

- Air conditioned
- Dustproof
- Cable entry to cabinets: bottom
- Cabinet plinth: 200 mm
- Room ceiling min. height: 3000 mm
- Door min. clearance: 2300 x 1000 mm
- Raised floor: height 500 mm

T.O.P. Cabinet dimensions (W x H x D) [mm]

Holding Furnace feeding

r43.41-3321-THD-GEN01-PCP01
r44.41-3322-THD-GEN01-PCP01

4200 x 2000 (+200) x 600

Normal 400Vac: 833 A + 12A
UPS 230Vac: 10 A

Melting Furnace + RFI feeding

r43.31-3321-TMT-GEN01-PCP01
r44.31-3322-TMT-GEN01-PCP01

2800 x 2000 (+200) x 600

Normal 400Vac: 182A + 36A + 12A
UPS 230Vac: 20 A

Perm. Magnet Stirrer feeding + UPS

r43.62-3321-HGS-GEN01-PCP01
2400 x 2000 (+200) x 600

Normal 400Vac: 185A + 8A
UPS 230Vac: 23A

Hydraulic group feeding

r43.61-552x-GEN-GEN01-PCP01
2000 x 2000 (+200) x 600

Normal 400Vac: 91 A
UPS 230Vac: 10 A

Casting Line UPS rack

r43.31-0321-GEN-APU01-PDP01
r43.41-0322-GEN-APU01-PDP01

800 x 2000 (+200) x 1000

Casting Line UPS rack

r43.62-3321-HGS-APU01-PDP01
800 x 2000 (+200) x 1000

Cabinet Colour Code

- Melter Furnace
- Holder Furnace
- Stirrer
- Spare
- UPS (230V)
- HYD group
- Busbar Distrib. SB

Legend

- 400 VAC - 50Hz (AIB)
- UPS 230 VAC - 50Hz (IFI)
- Network

Scale 1:50

J1	2025/11/21	Change in RIA cabin width, from 1600 mm to 2000 mm and overall review.	ANSA	ANSA	RORI
I1	2025/10/20	Elec Room dimensions updated based on AIB drawing 01_1_101304 KOORDINA NÍ SITUACE. Cabinet size & tagging updated.	INGA	INGA	JOCA
H1	2025/08/05	Elec Room billet lines: 3311-TMT & 3312-TMT TOP 7 corrected	INGA	INGA	JOCA
G1	2025/05/28	Elec Room billet lines: cabinet layout updated due to ceiling constraint	INGA	INGA	JOCA
F1	2025/07/27	Elec Room Strip 1 & 2 resized, cabinet layout updated	INGA	INGA	JOCA
E1	2025/03/20	Cabinets of Hyd. Groups move to Elec. Rooms	INGA	INGA	JOCA
D1	2025/03/20	RIA machines' Distribution Switchboard in Billet Elec. Room	INGA	INGA	JOCA
C1	2025/01/19	Cabinet dimensions and layout updated. Estimated weights	INGA	INGA	JOCA
B1	2025/01/16	Cont. Casting Area layout changed + RFI power cabinet	INGA	INGA	JOCA
A1	2025/01/10	Initial revision	INGA	INGA	JOCA
Rev.	Date	Revisions description	Designed	Draw	Approved

CONTRACTOR



CONTRACTOR dwg number

2558-0000-GEN-E-DWG-ECLA

Rev.

J1

Project Code

E2558

Project Name

ALFAGEN

Document Title

BASIC ELECTRICAL CABINET LAYOUT

DESIGNED:

ANSA

DRAWN:

ANSA

APPROVED:

RORI

DATE:

2025/11/21

DATE:

2025/11/21

DATE:

2025/11/21

Scale

see dwg

Format

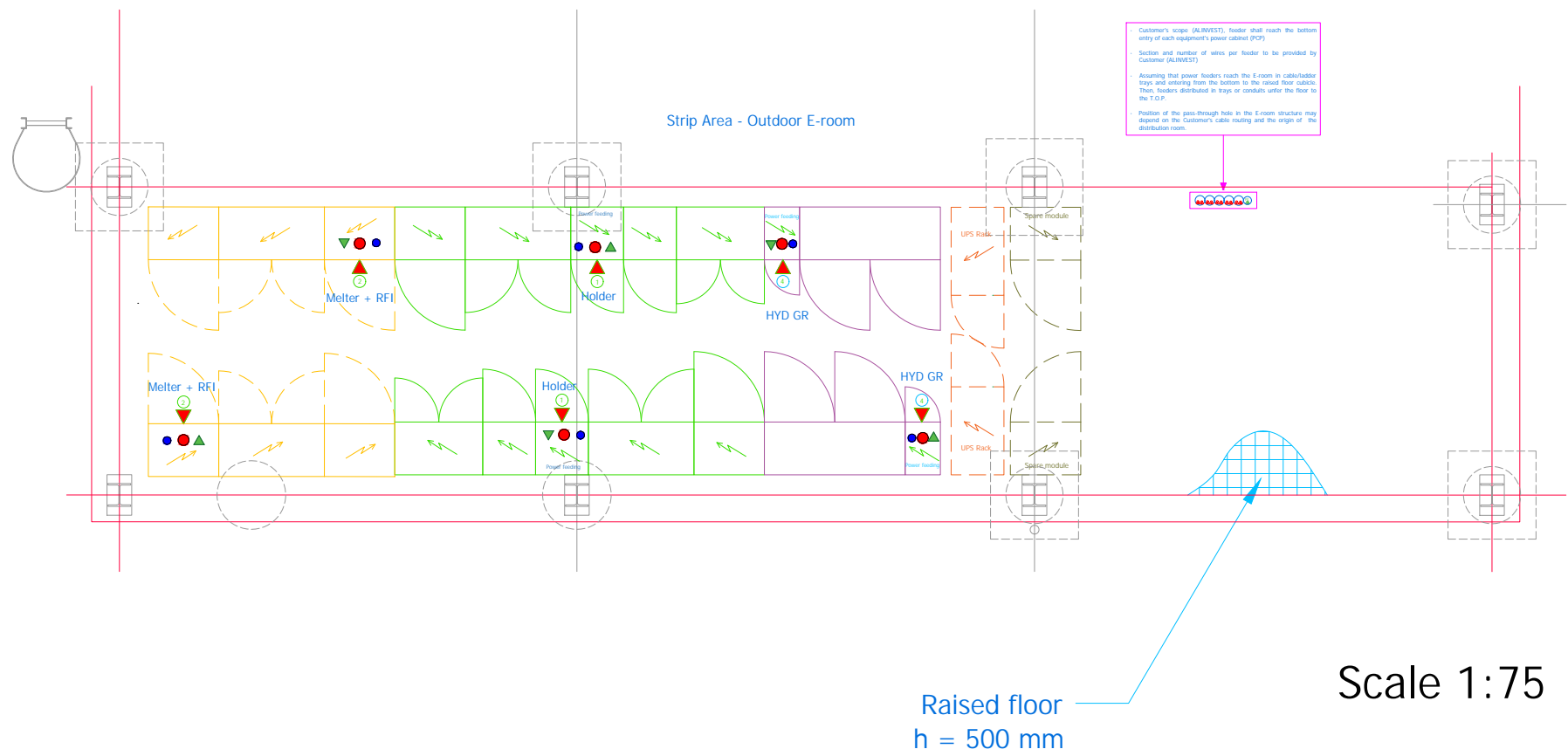
A3

Sheet

5 of 10

ELECTRICAL CABINETS - CONTINUOUS CASTING AREA




STRIP CASTING LINES 3 & 4



MCC Room requirements	
<div><div></div><div>Air conditioned</div></div> <div><div></div><div>Dustproof</div></div> <div><div></div><div>Cable entry to cabinets: bottom</div></div> <div><div></div><div>Cabinet plinth: 200 mm</div></div> <div><div></div><div>Room ceiling min. height: 3000 mm</div></div> <div><div></div><div>Door min. clearance: 2300 x 1000 mm</div></div> <div><div></div><div>Raised floor: height 500 mm</div></div>	
T.O.P.	Cabinet dimensions (W x H x D) [mm]
1	Holding Furnace feeding + UPS link
	332x-THD-GEN01-PCP01
	4200 x 2000 (+200) x 600
	<div><div></div>Normal 400Vac: 808A + 12A</div> <div><div></div>UPS 230Vac: 10 A</div>
2	Melting Furnace + RFI feeding + UPS link
	332x-TMT-GEN01-PCP01
	2800 x 2000 (+200) x 600
4	Hydraulic group feeding
	552x-GEN-GEN01-PCP01
	2000 x 2000 (+200) x 600
U4 U5	Casting Line UPS rack
	r43.31-0323-GEN-APU01-PDP01 r43.41-0324-GEN-APU01-PDP01
	800 x 2000 (+200) x 1000


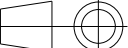

Cabinet Colour Code		Legend			
<div></div>	Melter Furnace	<div></div>	400 VAC - 50Hz (AIB)		
<div></div>	Holder Furnace	<div></div>	UPS 230 VAC - 50Hz (IFI)		
<div></div>	Stirrer	<div></div>	Network		
<div></div>	Spare				
<div></div>	UPS (230V)				
<div></div>	HYD group				
<div></div>	Busbar Distrib. SB				

J1	2025/11/21	Change in RIA cabin width, from 1600 mm to 2000 mm and overall review.	ANSA	ANSA	RORI
I1	2025/10/20	Elec Room dimensions updated based on AIB drawing 01_1_101304 KOORDINA NÍ SITUACE. Cabinet size & tagging updated.	INGA	INGA	JOCA
H1	2025/08/05	Elec Room billet lines: 3311-TMT & 3312-TMT TOP 7 corrected	INGA	INGA	JOCA
G1	2025/05/28	Elec Room billet lines: cabinet layout updated due to ceiling constraint	INGA	INGA	JOCA
F1	2025/07/27	Elec Room Strip 1 & 2 resized, cabinet layout updated	INGA	INGA	JOCA
E1	2025/03/20	Cabinets of Hyd. Groups move to Elec. Rooms	INGA	INGA	JOCA
D1	2025/03/20	RIA machines' Distribution Switchboard in Billet Elec. Room	INGA	INGA	JOCA
C1	2025/01/19	Cabinet dimensions and layout updated. Estimated weights	INGA	INGA	JOCA
B1	2025/01/16	Cont. Casting Area layout changed + RFI power cabinet	INGA	INGA	JOCA
A1	2025/01/10	Initial revision	INGA	INGA	JOCA
Rev.	Date	Revisions description	Designed	Draw	Approved

CONTRACTOR		CONTRACTOR dwg number	Rev. J1	Project Code E2558		Project Name ALFAGEN			
		2558-0000-GEN-E-DWG-ECLA		Document Title BASIC ELECTRICAL CABINET LAYOUT					Scale see dwg
CLIENT		CLIENT dwg number	Rev. J1	DESIGNED: ANSA		DRAWN: ANSA		APPROVED: RORI	Format A3
		2558-0000-GEN-E-DWG-ECLA		DATE: 2025/11/21		DATE: 2025/11/21		DATE: 2025/11/21	Sheet 6 OF 10

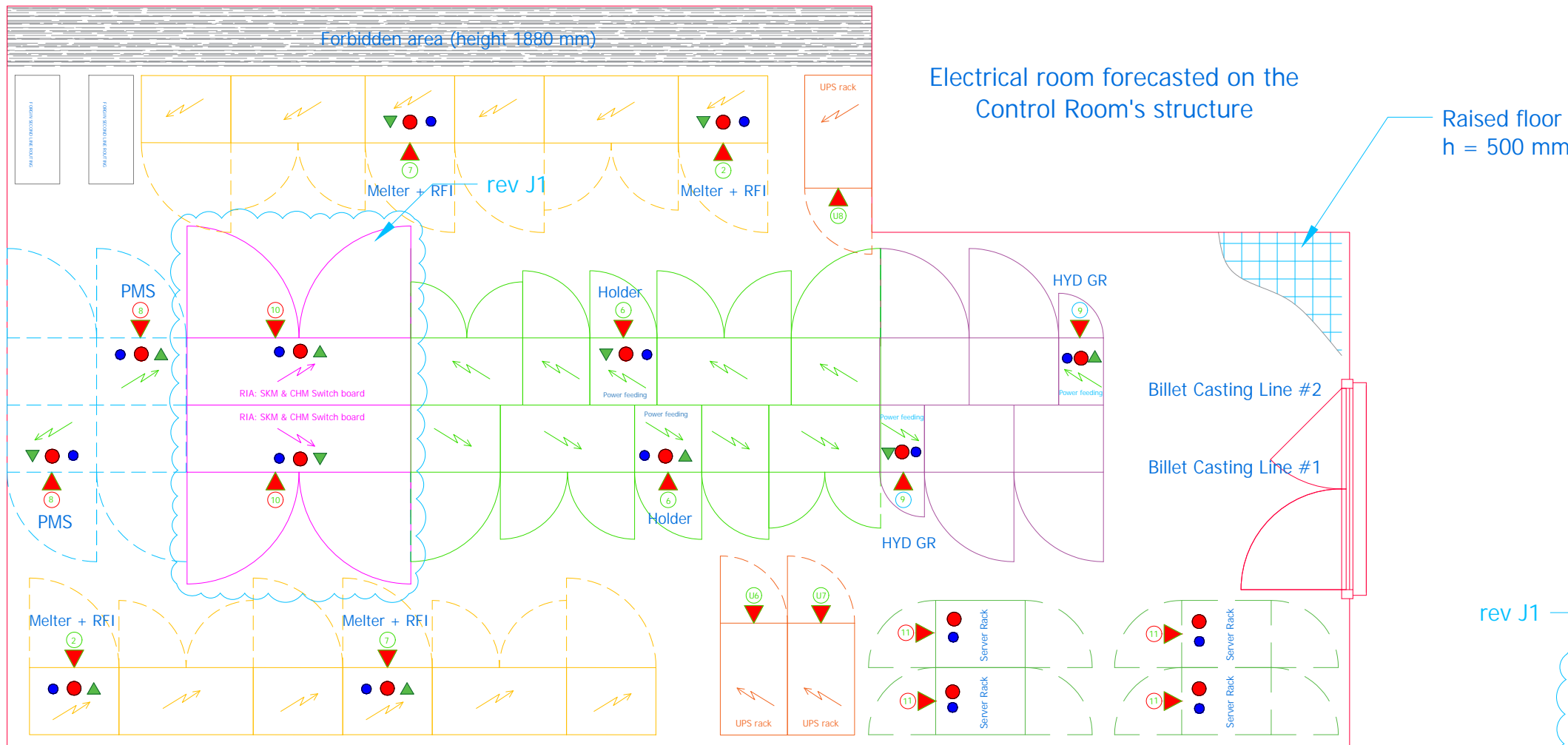
BASIC ELECTRICAL CABINET LAYOUT

BILLET CASTING

G	J1	2025/11/21	Change in RIA cabin width, from 1600 mm to 2000 mm and overall review.	ANSA	ANSA	RORI																	
	I1	2025/10/20	Elec Room dimensions updated based on A1B drawing 01_1_101304 KOORDINA NI SITUACE. Cabinet size & tagging updated.	INGA	INGA	JOCA																	
	H1	2025/08/05	Elec Room billet lines: 3311-TMT & 3312-TMT TOP 7 corrected	INGA	INGA	JOCA																	
	G1	2025/05/28	Elec Room billet lines: cabinet layout updated due to ceiling constraint	INGA	INGA	JOCA																	
H	F1	2025/07/27	Elec Room Strip 1 & 2 resized, cabinet layout updated	INGA	INGA	JOCA	<div>CONTRACTOR</div> <div></div> <div>CONTRACTOR dwg number</div> <div>2558-0000-GEN-E-DWG-ECLA</div> <div>Rev. J1</div> <div>Project Code E2558</div> <div>Project Name ALFAGEN</div> <div></div>																
	E1	2025/03/20	Cabinets of Hyd. Groups move to Elec. Rooms	INGA	INGA	JOCA																	
	D1	2025/03/20	RIA machines' Distribution Switchboard in Billet Elec. Room	INGA	INGA	JOCA																	
	C1	2025/01/19	Cabinet dimensions and layout updated. Estimated weights	INGA	INGA	JOCA																	
	B1	2025/01/16	Cont. Casting Area layout changed + RFI power cabinet	INGA	INGA	JOCA																	
	A1	2025/01/10	Initial revision	INGA	INGA	JOCA																	
	Rev.	Date	Revisions description	Designed	Draw	Approved		<div>CLIENT</div> <div></div> <div>CLIENT dwg number</div> <div>2558-0000-GEN-E-DWG-ECLA</div> <div>Rev. J1</div> <div>DESIGNED: ANSA</div> <div>DRAWN: ANSA</div> <div>APPROVED: RORI</div> <div>Format A3</div> <div>DATE: 2025/11/21</div> <div>DATE: 2025/11/21</div> <div>DATE: 2025/11/21</div> <div>Sheet 7 of 10</div>															
1		2		3		4		5		6		7		8		9		10		11		12	

ELECTRICAL CABINETS - BILLET CASTING AREA

BILLET CASTING LINES 1 & 2



Scale 1:50

MCC Room requirements

- Air conditioned
- Dustproof
- Cable entry to cabinets: bottom
- Cabinet plinth: 200 mm
- Room ceiling min. height: 3000 mm
- Door min. clearance: 2300 x 1000 mm
- Raised floor: height 500 mm

T.O.P. Cabinet dimensions (W x H x D) [mm]

6 Holding Furnace feeding + UPS link
r41.31-3311-THD-GEN01-PCP01
4200 x 2000 (+100) x 600
● Normal 400Vac: 1168A + 37A
▲ UPS 230Vac: 10 A

7 Melting Furnace + RFI feeding + UPS link
r41.31-3311-TMT-GEN01-PCP01
r41.41-3312-TMT-GEN01-PCP01
2800 x 2000 (+100) x 600
● Normal 400Vac: 251A + 36A + 37A + 60A
▲ UPS 230Vac: 20 A

8 Perm. Magnet Stirrer feeding
r41.62-3311-HGS-GEN01-PCP01
1600 x 2000 (+100) x 600
● Normal 400Vac: 63 A
▲ UPS 230Vac: 10 A

9 Hydraulic Group
r41.63-5511-GEN-GEN01-PCP01
2000 x 2000 (+100) x 600
● Normal 400Vac: 136 A
▲ UPS 230Vac: 10 A




10 RIA Distribution & Communication Panel
2000 x 2000 (+100) x 600
● Normal 400Vac: 400 A
▲ UPS 230Vac: 10 A

11 Control Room Servers
r41.31-0600-GEN-SER01 (BACK BONE)
r41.31-0600-GEN-SER02 (CAMERAS)
r41.31-0600-GEN-SER03 (SPARE)
r41.31-0600-GEN-SER04 (SPARE)
800 x 2000 (+100) x 800
● Normal 400Vac: 15 A (supply from IFI PCP)

U6 Billet Line UPS racks
U7 r41.31-0311-GEN-APU01-PDP01
U8 r41.31-0600-GEN-APU01-PDP01
xxxx-0313-GEN-APU01-PDP01 (future)
800 x 2000 (+200) x 1000

Cabinet Colour Code		Legend	
	Melter Furnace		400 VAC - 50Hz (AIB)
	Holder Furnace		UPS 230 VAC - 50Hz (IFI)
	Stirrer		Network
	Spare		
	UPS (230V)		
	HYD group		
	Busbar Distrib. SB		

J1	2025/11/21	Change in RIA cabin width, from 1600 mm to 2000 mm and overall review.	ANSA	ANSA	RORI
I1	2025/10/20	Elec Room dimensions updated based on AIB drawing 01_1_101304 KOORDINA NI SITUACE. Cabinet size & tagging updated.	INGA	INGA	JOCA
H1	2025/08/05	Elec Room billet lines: 3311-TMT & 3312-TMT TOP 7 corrected	INGA	INGA	JOCA
G1	2025/05/28	Elec Room billet lines: cabinet layout updated due to ceiling constraint	INGA	INGA	JOCA
F1	2025/07/27	Elec Room Strip 1 & 2 resized, cabinet layout updated	INGA	INGA	JOCA
E1	2025/03/20	Cabinets of Hyd. Groups move to Elec. Rooms	INGA	INGA	JOCA
D1	2025/03/20	RIA machines' Distribution Switchboard in Billet Elec. Room	INGA	INGA	JOCA
C1	2025/01/19	Cabinet dimensions and layout updated. Estimated weights	INGA	INGA	JOCA
B1	2025/01/16	Cont. Casting Area layout changed + RFI power cabinet	INGA	INGA	JOCA
A1	2025/01/10	Initial revision	INGA	INGA	JOCA
Rev.	Date	Revisions description	Designed	Draw	Approved

CONTRACTOR		CONTRACTOR dwg number	Rev.	Project Code E2558			Project Name ALFAGEN			
		2558-0000-GEN-E-DWG-ECLA	J1	Document Title BASIC ELECTRICAL CABINET LAYOUT						
CLIENT		CLIENT dwg number	Rev.	Scale see dwg						
		2558-0000-GEN-E-DWG-ECLA	J1	DESIGNED: ANSA			DRAWN: ANSA		APPROVED: RORI	
				DATE: 2025/11/21		DATE: 2025/11/21		DATE: 2025/11/21		Sheet 8 of 10

	1	2	3	4	5	6	7	8	9	10	11	12
A												
B												
C												
D												
E												
F												
G	J1	2025/11/21	Change in RIA cabin width, from 1600 mm to 2000 mm and overall review.	ANSA	ANSA	RORI						
	I1	2025/10/20	Elec Room dimensions updated based on A1B drawing 01_1_101304 KOORDINA NÍ SITUACE. Cabinet size & tagging updated.	INGA	INGA	JOCA						
	H1	2025/08/05	Elec Room billet lines: 3311-TMT & 3312-TMT TOP 7 corrected	INGA	INGA	JOCA						
	G1	2025/05/28	Elec Room billet lines: cabinet layout updated due to ceiling constraint	INGA	INGA	JOCA						
	F1	2025/07/27	Elec Room Strip 1 & 2 resized, cabinet layout updated	INGA	INGA	JOCA						
	E1	2025/03/20	Cabinets of Hyd. Groups move to Elec. Rooms	INGA	INGA	JOCA						
	D1	2025/03/20	RIA machines' Distribution Switchboard in Billet Elec. Room	INGA	INGA	JOCA						
	C1	2025/01/19	Cabinet dimensions and layout updated. Estimated weights	INGA	INGA	JOCA						
	B1	2025/01/16	Cont. Casting Area layout changed + RFI power cabinet	INGA	INGA	JOCA						
	A1	2025/01/10	Initial revision	INGA	INGA	JOCA						
	Rev.	Date	Revisions description	Designed	Draw	Approved						
	1	2	3	4	5	6	7	8	9	10	11	12

insertec

Furnaces & Refractories

CONTRACTOR

2558-0000-GEN-E-DWG-ECLA

Rev.

J1

Project Code

E2558

Project Name

ALFAGEN

Document Title

BASIC ELECTRICAL CABINET LAYOUT

Scale

see dwg

CLIENT

ALINVEST

CLIENT dwg number

2558-0000-GEN-E-DWG-ECLA

Rev.

J1

DESIGNED:

ANSA

DRAWN:

ANSA

APPROVED:

RORI

DATE:

2025/11/21

DATE:

2025/11/21

DATE:

2025/11/21


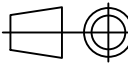

Format

A3

Sheet

9 of 10

ELECTRICAL CABINET ESTIMATED WEIGHT

	1	2	3	4	5	6	7	8	9	10	11	12			
A	ELECTRICAL CABINETS ESTIMATED WEIGHT												A		
B	FORECASTED CABINET WEIGHT & DIMENSIONS												B		
	ITEM	EQUIPMENT	CABINET CODE	MCC ROOM	DIMENSIONS [mm] W x H x D	Module height [mm]	Plinth height [mm]	Cabinet's aux element (Cooling fans, etc.)	Total cabinet height [mm]	Estimated weight of internal components	TOTAL [kg]	Note			
C	1	Tilttable Holder	r43.41-3321-THD-GEN01-PCF01	Strip Cast Room #1	4200 x 2000 x 600	2000	200	255	2455	350	1050				
	2	Tilttable Melter	r43.31-3321-TMT-GEN01-PCF01	Strip Cast Room #1	2800 x 2000 x 600	2000	200	255	2455	300	870				
	3	Tilttable Holder	r44.41-3322-THD-GEN01-PCF01	Strip Cast Room #1	4200 x 2000 x 600	2000	200	255	2455	375	1075				
	4	Tilttable Melter	r44.31-3322-TMT-GEN01-PCF01	Strip Cast Room #1	2800 x 2000 x 600	2000	200	255	2455	300	870				
	5	PM Stirrer	r43.62-3321-HGS-GEN01-PCF01	Strip Cast Room #1	800 x 2000 x 600	2000	200	255	2455	75	205				
	6	Hydraulic Group	r43.61-5521-GEN-GEN01-PCF01	Strip Cast Room #1	2000 x 2000 x 600	2000	200	255	2455	150	500				
	7	Hydraulic Group	r44.61-5522-GEN-GEN01-PCF01	Strip Cast Room #1	2000 x 2000 x 600	2000	200	255	2455	150	500				
	8	UPS	r43.31-0321-GEN-APU01-PDF01	Strip Cast Room #1	800 x 2200 x 1000	2000	200	255	2455	270	375				
	9	UPS	r43.31-0322-GEN-APU01-PDF01	Strip Cast Room #1	800 x 2200 x 1000	2000	200	255	2455	270	375				
	10	UPS	r41.62-3321-HGS-APU01-PDF01	Strip Cast Room #1	800 x 2200 x 1000	2000	200	255	2455	270	375				
D	11	Tilttable Holder	r45.41-3323-THD-GEN01-PCF01	Strip Cast Room #2	4200 x 2000 x 600	2000	200	255	2455	350	1050				
	12	Tilttable Melter	r45.31-3323-TMT-GEN01-PCF01	Strip Cast Room #2	2800 x 2000 x 600	2000	200	255	2455	300	870				
	13	Tilttable Holder	r46.41-3324-THD-GEN01-PCF01	Strip Cast Room #2	4200 x 2000 x 600	2000	200	255	2455	375	1075				
	14	Tilttable Melter	r46.31-3324-TMT-GEN01-PCF01	Strip Cast Room #2	2800 x 2000 x 600	2000	200	255	2455	300	870				
	15	Hydraulic Group	r45.61-5523-GEN-GEN01-PCF01	Strip Cast Room #2	2000 x 2000 x 600	2000	200	255	2455	150	500				
	16	Hydraulic Group	r46.61-5524-GEN-GEN01-PCF01	Strip Cast Room #2	2000 x 2000 x 600	2000	200	255	2455	150	500				
	17	UPS	r45.31-0323-GEN-APU01-PCF01	Strip Cast Room #2	800 x 2200 x 1000	2000	200	255	2455	270	375				
	18	UPS	r46.31-0324-GEN-APU01-PCF01	Strip Cast Room #2	800 x 2200 x 1000	2000	200	255	2455	270	375				
	19	Tilttable Holder	r40.51-3311-THD-GEN01-PCF01	Billet Cast Room	4200 x 2000 x 600	2000	100	0	2100	375	1075	fan removed from cabinet top side			
	20	Tilttable Melter	r41.31-3311-TMT-GEN01-PCF01	Billet Cast Room	2800 x 2000 x 600	2000	100	0	2100	300	870	fan removed from cabinet top side			
E	21	Tilttable Melter	r41.41-3312-TMT-GEN01-PCF01	Billet Cast Room	2800 x 2000 x 600	2000	100	0	2100	300	870	fan removed from cabinet top side			
	22	PM Stirrer	r41.62-3311-HGS-GEN01-PCF01	Billet Cast Room	1600 x 2000 x 600	2000	100	0	2100	100	360	fan removed from cabinet top side			
	23	UPS	r41.31-0311-GEN-APU01-PDF01	Billet Cast Room	800 x 2200 x 1000	2000	100	0	2100	270	375	fan removed from cabinet top side			
	24	UPS	r41.31-0600-GEN-APU01-PDF01	Billet Cast Room	800 x 2200 x 1000	2000	100	0	2100	270	375	fan removed from cabinet top side			
	25	RIA	r43.64-0311-GEN-GEN01-PCF01	Billet Cast Room	2000 x 2000 x 600	2000	100	0	2100	150	450	fan removed from cabinet top side			
	26	Hydraulic Group	r41.63-5511-GEN-GEN01-PCF01	Billet Cast Room	800 x 2000 x 600	2000	100	0	2100	250	600	fan removed from cabinet top side			
	27	Server Racks	r41.31-0600-GEN-SER0x-PCF01	Billet Cast Room	800 x 2000 x 600	2000	100	0	2100	200	590	fan removed from cabinet top side			
	28	Server Racks	r41.31-0600-GEN-SER0x-PCF01	Billet Cast Room	800 x 2000 x 600	2000	100	0	2100	200	590	fan removed from cabinet top side			
	29	Server Racks	r41.31-0600-GEN-SER0x-PCF01	Billet Cast Room	800 x 2000 x 600	2000	100	0	2100	200	590	fan removed from cabinet top side			
	30	Server Racks	r41.31-0600-GEN-SER0x-PCF01	Billet Cast Room	800 x 2000 x 600	2000	100	0	2100	200	590	fan removed from cabinet top side			
F	31	Tilttable Holder	xxx-3331-THD-GEN01-PCF01	Billet Cast Room	4200 x 2000 x 600	2000	100	0	2100	375	1075	fan removed from cabinet top side			
	32	Tilttable Melter	xxx-3331-TMT-GEN01-PCF01	Billet Cast Room	2800 x 2000 x 600	2000	100	0	2100	300	870	fan removed from cabinet top side			
	33	Tilttable Melter	xxx-3332-TMT-GEN01-PCF01	Billet Cast Room	2800 x 2000 x 600	2000	100	0	2100	300	870	fan removed from cabinet top side			
	34	PM Stirrer	xxx-3331-HGS-GEN01-PCF01	Billet Cast Room	1600 x 2000 x 600	2000	100	0	2100	100	335	fan removed from cabinet top side			
	35	UPS	xxx-0331-GEN-APU01-PDF01	Billet Cast Room	800 x 2200 x 1000	2000	100	0	2100	270	375	fan removed from cabinet top side			
	36	RIA	xxx-0331-GEN-GEN01-PCF01	Billet Cast Room	1600 x 2000 x 600	2000	100	0	2100	150	450	fan removed from cabinet top side			
	37	Hydraulic Group	xxx-5531-GEN-GEN01-PCF01	Billet Cast Room	800 x 2000 x 600	2000	100	0	2100	250	600	fan removed from cabinet top side			
G	J1	2025/11/21	Change in RIA cabin width, from 1600 mm to 2000 mm and overall review.	ANSA	ANSA	RORI									
	I1	2025/10/20	Elec Room dimensions updated based on A1B drawing 01_1_101304 KOORDINA. NÍ SITUACE. Cabinet size & tagging updated.	INGA	INGA	JOCA									
	H1	2025/08/05	Elec Room billet lines: 3311-TMT & 3312-TMT TOP 7 corrected	INGA	INGA	JOCA									
	G1	2025/05/28	Elec Room billet lines: cabinet layout updated due to ceiling constraint	INGA	INGA	JOCA									
H	F1	2025/07/27	Elec Room Strip 1 & 2 resized, cabinet layout updated	INGA	INGA	JOCA	CONTRACTOR		CONTRACTOR dwg number		Rev. J1	Project Code E2558	Project Name ALFAGEN		
	E1	2025/03/20	Cabinets of Hyd. Groups move to Elec. Rooms	INGA	INGA	JOCA			2558-0000-GEN-E-DWG-ECLA			Document Title BASIC ELECTRICAL CABINET LAYOUT			
	D1	2025/03/20	RIA machines' Distribution Switchboard in Billet Elec. Room	INGA	INGA	JOCA	CLIENT		CLIENT dwg number		Rev. J1	DESIGNED: ANSA			Scale see dwg
	C1	2025/01/19	Cabinet dimensions and layout updated. Estimated weights	INGA	INGA	JOCA			2558-0000-GEN-E-DWG-ECLA			DRAWN: ANSA		APPROVED: RORI	Format A3
	B1	2025/01/16	Cont. Casting Area layout changed + RFI power cabinet	INGA	INGA	JOCA						DATE: 2025/11/21		DATE: 2025/11/21	Sheet 10 of 10
	A1	2025/01/10	Initial revision	INGA	INGA	JOCA									
	Rev.	Date	Revisions description	Designed	Draw	Approved									
	1	2	3	4	5	6	7	8	9	10	11	12			